



AVCON SYSTEMS PVT. LTD.

Transforming Energy with Excellence

EFFICIENCY
RELIABILITY
CONSISTENCY
OPTIMALITY
SUSTAINABILITY
CUSTOMER



Company Introduction

Incorporated in 2012, AVCON SYSTEMS PVT. LTD. is one of the leading manufacturers of Epoxy Cast Current & Voltage Transformers in India. Company is headed by Mr. PANKAJ GOEL (Managing Director) who himself is an Engineering Graduate & Management Post Graduate & Mr. KUNAL AHUJA (Ex. Director) who himself is a Management Post Graduate. Company has been catering to the requirements of ever rising Power Sector viz. Generation, Control & Transmission.

Quality Policy

At Avcon Systems, we are committed to manufacturing and delivering high-quality Instrument transformers that meet or exceed customer expectations and Industry standards. Our dedication to quality is integral to our operations, and we strive for continuous improvement in all aspects of our business. To achieve this, we:

1. Ensure Compliance: Adhere to all applicable Indian & International standards, regulatory requirements, and customer specifications.
2. Focus on Customer Satisfaction: Understand and meet the needs of our customers by delivering reliable, efficient, and innovative transformer solutions.
3. Promote Continuous Improvement: Implement robust quality management systems and foster a culture of innovation and excellence.
4. Invest in Our People: Train and empower our employees to maintain the highest levels of quality and safety in their work.
5. Monitor and Measure Performance: Regularly evaluate our processes, products, and services to identify areas for improvement and ensure consistency.

At Avcon Systems, quality is not just a goal-it is the foundation of everything we do.

Vision



At Avcon, The manufacturing facility has been upgraded with the state of Art, plant and machinery, comprising of modern Automatic pressure gelation machines, and other requisite equipment's for reliable manufacturing. It will enable the company to supply high-quality products with faster delivery. A team of qualified professionals employed is working around the clock for giving technical support and providing a defect free product to our esteemed customers.

Infrastructure

At Avcon, The manufacturing facility has been upgraded with the state of Art, plant and machinery, comprising of modern Automatic pressure gelation machines, and other requisite equipment's for reliable manufacturing. It will enable the company to supply high-quality products with faster delivery. A team of qualified professionals employed is working around the clock for giving technical support and providing a defect free product to our esteemed customers





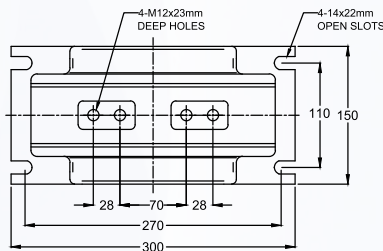
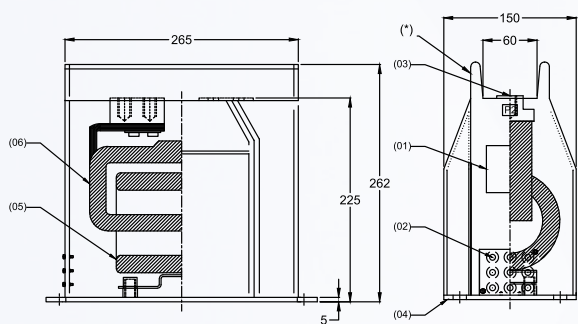
CURRENT TRANSFORMER (WOUND TYPE) UP TO 1250A, 12kV Model Type: AV-CT-11kV-01



TECHNICAL SPECIFICATIONS

Rated System Voltage (Um)	12kV
Rated Test Voltage (Max.)	35kV / 75kVp
Rated Primary Current (Max.)	1250 A
Rated Secondary Current (Max.)	1A Or 5A
Rated Short Time Current (Max.)	40 kA
Rated Frequency	50Hz Or 60Hz
Nos. of Cores (Max.)	3Nos.
Rated Burden (Max.)	30VA
Insulation Class	E Or Better
Accuracy Class	Metering : Upto 0.2S Protection: Up to 5P20 Special Prot : PS, PX

Note: Final specifications shall be as per customer requirements



06	PRIMARY WINDING
05	SECONDARY WINDING
04	MOUNTING BASE PLATE
03	PRIMARY TERMINAL
02	SECONDARY TERMINALS
01	RATING PLATE
SR. NO.	DESCRIPTION

*Without collar also offered on request

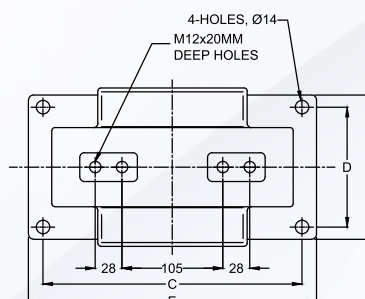
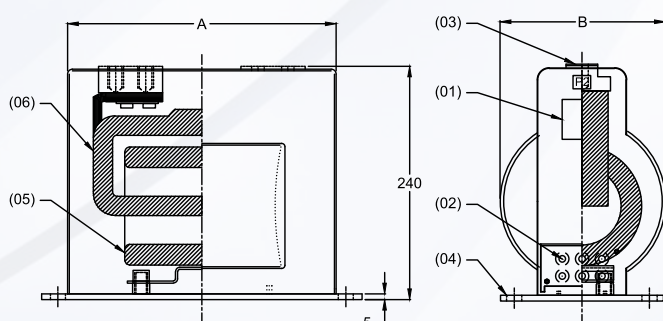
CURRENT TRANSFORMER (WOUND TYPE) UP TO 1250A, 17.5kV Model Type: AV-CT-11kV-03



TECHNICAL SPECIFICATIONS

Rated System Voltage (Um)	17.5 kV
Rated Test Voltage (Max.)	38 kV / 95kVp
Rated Primary Current (Max.)	1250 A
Rated Secondary Current (Max.)	1A Or 5A
Rated Short Time Current (Max.)	40 kA
Rated Frequency	50Hz Or 60Hz
Nos. of Cores (Max.)	3Nos.
Rated Burden (Max.)	30VA
Insulation Class	E Or Better
Accuracy Class	Metering : Upto 0.2S Protection: Up to 5P20 Special Prot : PS, PX

Note: Final specifications shall be as per customer requirements



A2-B2	310	180	300	150	335	175
A2-B1	310	165	300	150	335	175
A1-B2	275	180	270	125	300	150
A1-B1	275	165	270	125	300	150

	A	B	C	D	E	F
TYPE	DIMENSIONS					
06	PRIMARY WINDING					
05	SECONDARY WINDING					
04	MOUNTING BASE PLATE					
03	PRIMARY TERMINAL					
02	SECONDARY TERMINAL (M6)					
01	RATING PLATE					
SR. NO.	DESCRIPTION					

**CURRENT TRANSFORMER
(WOUND TYPE)
UP TO 1250A, 12kV
Model Type: AV-CT-11kV-07**

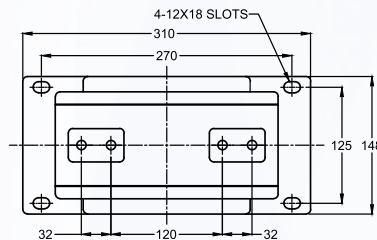
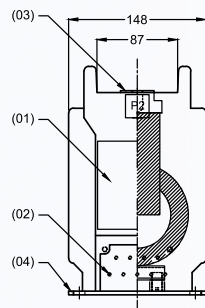
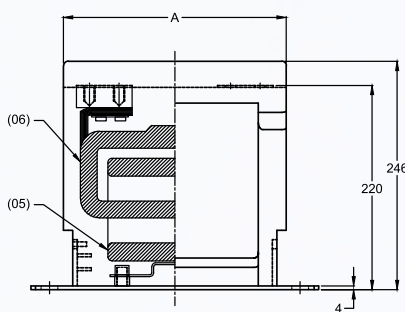


TECHNICAL SPECIFICATIONS

Rated System Voltage (Um)	12kV
Rated Test Voltage (Max.)	35kV / 75kVp
Rated Primary Current (Max.)	1250A
Rated Secondary Current (Max.)	1A Or 5A
Rated Short Time Current (Max.)	40kA
Rated Frequency	50Hz Or 60Hz
Nos. of Cores (Max.)	4 Nos.
Rated Burden (Max.)	30VA
Insulation Class	E Or Better
Accuracy Class	Metering: Up to 0.2s Protection: Up to 5P20 Special Prot.: PS, PX

Note: Final specifications shall be as per customer requirements

A-3	285
A-2	265
A-1	240
TYPE	A
DIMENSIONS	



06	PRIMARY WINDING
05	SECONDARY WINDING
04	MOUNTING BASE PLATE
03	PRIMARY TERMINAL
02	SECONDARY TERMINALS (M6)
01	RATING PLATE
SR. NO.	DESCRIPTION

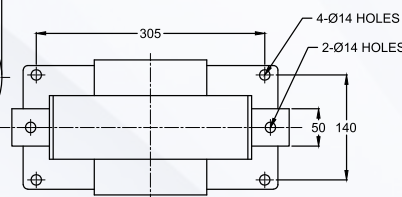
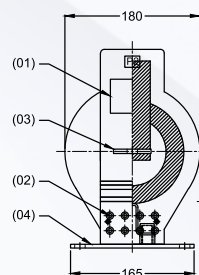
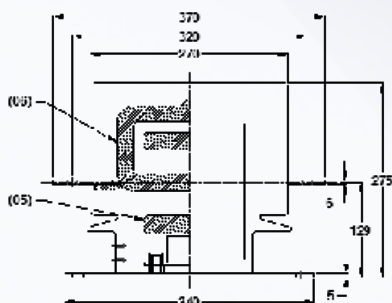
**CURRENT TRANSFORMER
(WOUND TYPE)
UP TO 600A, 12kV
Model Type: AV-CT-11kV-08**



TECHNICAL SPECIFICATIONS

Rated System Voltage (Um)	12kV
Rated Test Voltage (Max.)	35kV / 75kVp
Rated Primary Current (Max.)	600A
Rated Secondary Current (Max.)	1A Or 5A
Rated Short Time Current (Max.)	25kA
Rated Frequency	50Hz Or 60Hz
Nos. of Cores (Max.)	2 Nos.
Rated Burden (Max.)	30 VA
Insulation Class	E Or Better
Accuracy Class	Metering: Up to 0.2s Protection: Up to 5P20 Special Prot.: PS, PX

Note: Final specifications shall be as per customer requirements



06	PRIMARY WINDING
05	SECONDARY WINDING
04	MOUNTING BASE PLATE
03	PRIMARY TERMINAL
02	SECONDARY TERMINALS (M6)
01	RATING PLATE
SR. NO.	DESCRIPTION

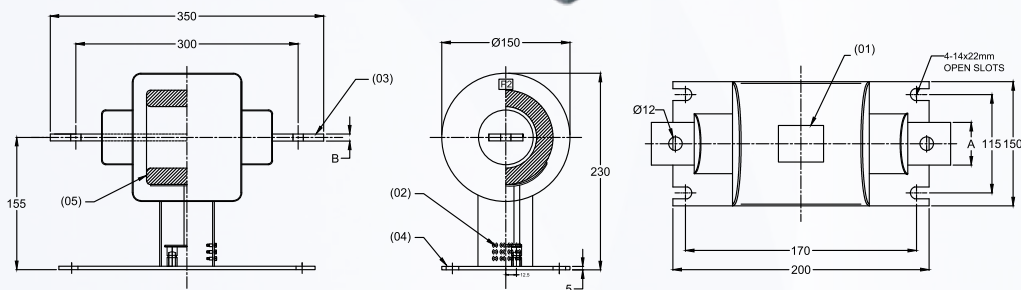
CURRENT TRANSFORMER (BAR TYPE) UP TO 1250A, 12kV Model Type: AV-CT-11kV-04



TECHNICAL SPECIFICATIONS

Rated System Voltage (Um)	12kV
Rated Test Voltage (Max.)	28kV / 75kVp
Rated Primary Current (Max.)	200A To 1250A
Rated Secondary Current (Max.)	1A Or 5A
Rated Short Time Current (Max.)	40kA
Rated Frequency	50Hz Or 60Hz
Nos. of Cores (Max.)	3 Nos.
Rated Burden (Max.)	30VA
Insulation Class	E Or Better
Accuracy Class	Metering: Up to 0.2s Protection: Up to 5P20 Special Prot.: PS, PX

Note: Final specifications shall be as per customer requirements



05	SECONDARY WINDING
04	MOUNTING BASE PLATE
03	PRIMARY TERMINAL
02	SECONDARY TERMINALS (M6)
01	RATING PLATE
SR. NO.	DESCRIPTION

*Dimensions A & B shall be as per current ratings

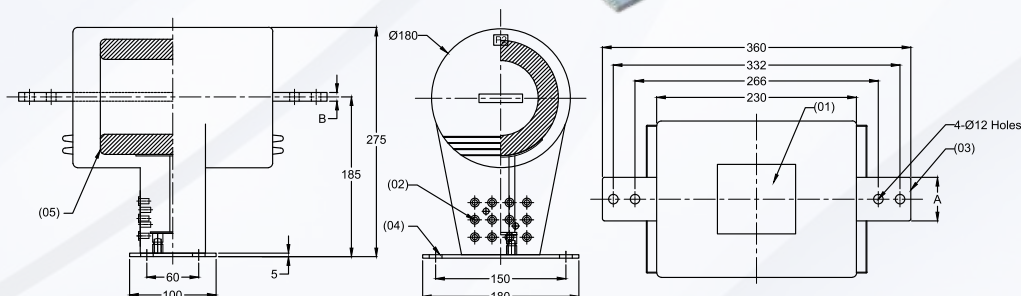
06. CURRENT TRANSFORMER (BAR TYPE) UP TO 1800A, 17.5kV Model Type: AV-CT-11kV-06



TECHNICAL SPECIFICATIONS

Rated System Voltage (Um)	17.5kV
Rated Test Voltage (Max.)	38kV / 95kVp
Rated Primary Current (Max.)	200A To 1800A
Rated Secondary Current (Max.)	1A Or 5A
Rated Short Time Current (Max.)	50kA
Rated Frequency	50Hz Or 60Hz
Nos. of Cores (Max.)	4 Nos.
Rated Burden (Max.)	30 VA
Insulation Class	E Or Better
Accuracy Class	Metering: Up to 0.2s Protection: Up to 5P20 Special Prot.: PS, PX

Note: Final specifications shall be as per customer requirements



05	SECONDARY WINDING
04	MOUNTING BASE PLATE
03	PRIMARY TERMINAL
02	SECONDARY TERMINALS (M6)
01	RATING PLATE
SR. NO.	DESCRIPTION

*Dimensions A & B shall be as per current ratings

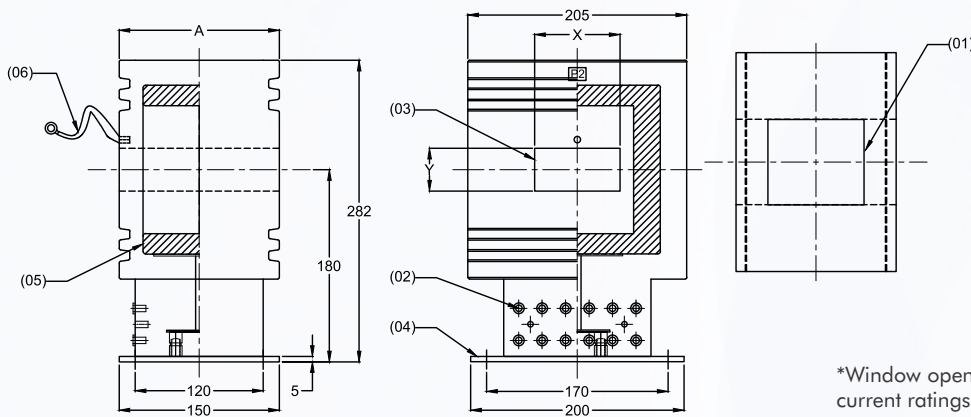
**CURRENT TRANSFORMER
(WINDOW/SLOT TYPE)
UP TO 3000A, 12kV
Model Type: AV-CT-11kV-05**



TECHNICAL SPECIFICATIONS

Rated System Voltage (Um)	12kV
Rated Test Voltage (Max.)	28kV / 75kVp
Rated Primary Current (Max.)	300A To 3000A
Rated Secondary Current (Max.)	1A Or 5A
Rated Short Time Current (Max.)	50kA
Rated Frequency	50Hz Or 60Hz
Nos. of Cores (Max.)	4 Nos.
Rated Burden (Max.)	30VA
Insulation Class	E Or Better
Accuracy Class	Metering: Up to 0.2s Protection: Up to 5P20 Special Prot.: PS, PX

Note: Final specifications shall be as per customer requirements



A-2	250
A-1	150
TYPE	A
DIMENSIONS	
06	PRIMARY PIGTAIL (To be connected with HV Bus Bar)
05	SECONDARY WINDING
04	MOUNTING BASE PLATE
03	PRIMARY TERMINAL
02	SECONDARY TERMINALS (M6)
01	RATING PLATE
SR. NO.	DESCRIPTION

*Window opening (Round/Rectangular) size shall be as per current ratings / Customer requirements

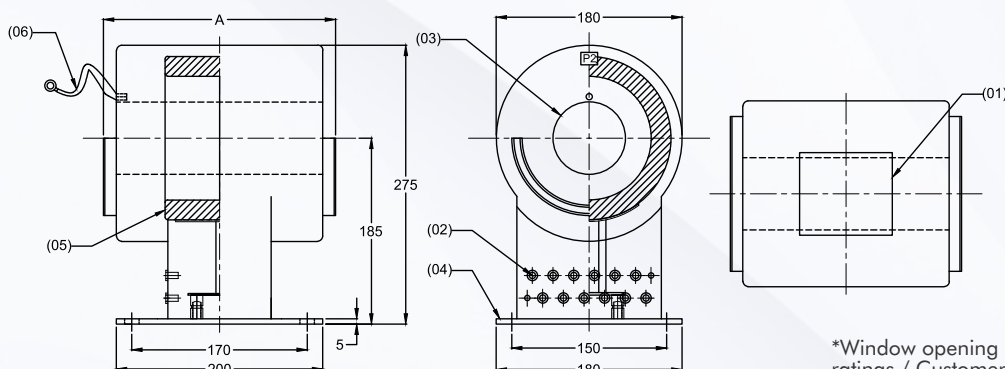
**CURRENT TRANSFORMER
(WINDOW/SLOT TYPE)
UP TO 2000A, 12kV
Model Type: AV-CT-11kV-09**



TECHNICAL SPECIFICATIONS

Rated System Voltage (Um)	12kV
Rated Test Voltage (Max.)	28kV / 75kVp
Rated Primary Current (Max.)	300A To 2000A
Rated Secondary Current (Max.)	1A Or 5A
Rated Short Time Current (Max.)	50kA
Rated Frequency	50Hz Or 60Hz
Nos. of Cores (Max.)	4 Nos.
Rated Burden (Max.)	30 VA
Insulation Class	E Or Better
Accuracy Class	Metering: Up to 0.2s Protection: Up to 5P20 Special Prot.: PS, PX

Note: Final specifications shall be as per customer requirements

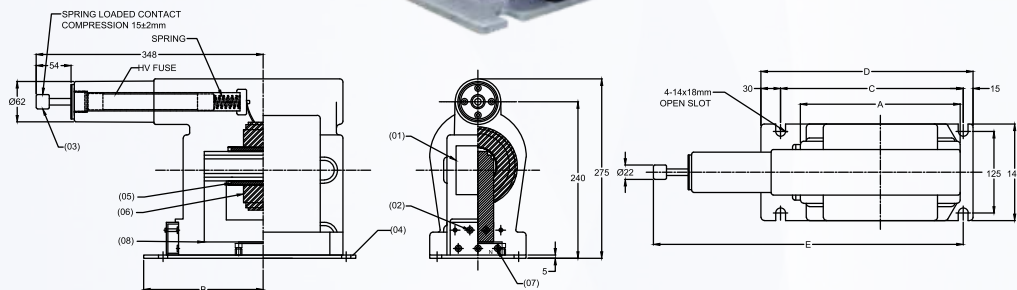


A-3	300
A-2	225
A-1	150
TYPE	A
DIMENSIONS	
06	PRIMARY PIGTAIL (To be connected with HV Bus Bar)
05	SECONDARY WINDING
04	MOUNTING BASE PLATE
03	PRIMARY TERMINAL
02	SECONDARY TERMINALS (M6)
01	RATING PLATE
SR. NO.	DESCRIPTION

*Window opening (Round/Rectangular) size shall be as per current ratings / Customer requirements

VOLTAGE TRANSFORMER (1-PHASE, EARTHED, DRAWOUT/GUN TYPE) UP TO 17.5kV

Model Type: AV-PT-11kV-05



TECHNICAL SPECIFICATIONS

Rated System Voltage (Um)	17.5kV
Rated Test Voltage (Max.)	38kV / 95kVp
Rated Primary Voltage (Max.)	Up to 15.5kV/ $\sqrt{3}$
Rated Secondary voltage (Max.)	110V/ $\sqrt{3}$, 110V, 230V, etc.
Rated Voltage Factor (Max.)	1.9 for 8 Hours
Rated Frequency	50Hz Or 60Hz
Nos. of Sec. Windings (Max.)	3 Nos.
Rated Burden (Max.)	300VA
Insulation Class	E Or Better
Accuracy Class	Metering: Up to 0.2 Protection: 3P, 6P

Note: Final specifications shall be as per customer requirements

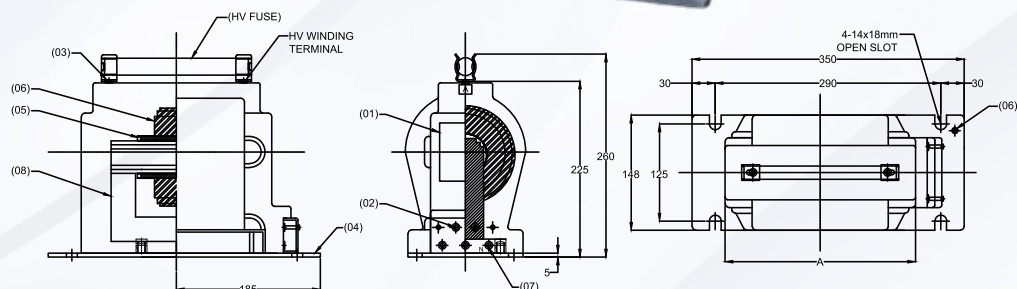
A-2	285	203	320	365	495
A-1	245	183	280	325	475
TYPE	A	B	C	D	E

DIMENSIONS

08	CORE
07	PRIMARY NEUTRAL TERMINAL (N)
06	PRIMARY WINDING
05	SECONDARY WINDING
04	MOUNTING BASE PLATE
03	PRIMARY TERMINAL (A)
02	SECONDARY TERMINALS (M6)
01	RATING PLATE
SR. NO.	DESCRIPTION

VOLTAGE TRANSFORMER (1-PHASE, EARTHED, FIXED TYPE) UP TO 12kV

Model Type: AV-PT-11kV-06



TECHNICAL SPECIFICATIONS

Rated System Voltage (Um)	12kV
Rated Test Voltage (Max.)	28kV / 75kVp
Rated Primary Voltage (Max.)	Up to 11kV/ $\sqrt{3}$
Rated Secondary voltage (Max.)	110V/ $\sqrt{3}$, 110V, 230V, etc.
Rated Voltage Factor (Max.)	1.9 for 8 Hours
Rated Frequency	50Hz Or 60Hz
Nos. of Sec. Windings (Max.)	3 Nos.
Rated Burden (Max.)	300VA
Insulation Class	E Or Better
Accuracy Class	Metering: Up to 0.2 Protection: 3P, 6P

Note: Final specifications shall be as per customer requirements

A-2	285
A-1	245
TYPE	A

DIMENSIONS

08	CORE
07	PRIMARY NEUTRAL TERMINAL (N)
06	PRIMARY WINDING
05	SECONDARY WINDING
04	MOUNTING BASE PLATE
03	PRIMARY TERMINAL (A)
02	SECONDARY TERMINALS (M6)
01	RATING PLATE
SR. NO.	DESCRIPTION

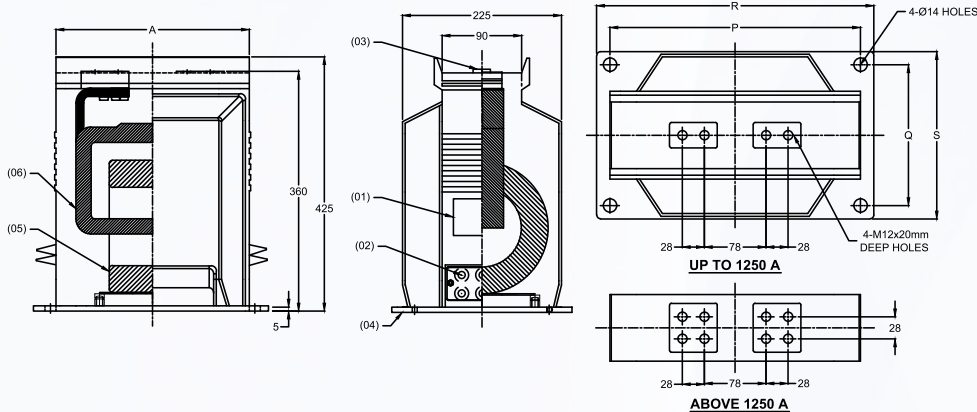
**CURRENT TRANSFORMER
(WOUND TYPE)
UP TO 2000A, 36kV
Model Type: AV-CT-33kV-04**



TECHNICAL SPECIFICATIONS

Rated System Voltage (Um)	36kV
Rated Test Voltage (Max.)	85kV / 190kVp
Rated Primary Current (Max.)	2000A
Rated Secondary Current (Max.)	1A Or 5A
Rated Short Time Current (Max.)	40kA
Rated Frequency	50Hz Or 60Hz
Nos. of Cores (Max.)	4 Nos.
Rated Burden (Max.)	30VA
Insulation Class	E Or Better
Accuracy Class	Metering: Up to 0.2s Protection: Up to 5P20 Special Prot.: PS, PX

Note: Final specifications shall be as per customer requirements



A-3	330	360	170	395	225
A-2	280	360	170	395	225
A-1	220	221	191	255	225
TYPE	A	P	Q	R	S

DIMENSIONS

06	PRIMARY WINDING
05	SECONDARY WINDING
04	MOUNTING BASE PLATE
03	PRIMARY TERMINAL
02	SECONDARY TERMINALS (M6)
01	RATING PLATE
SR. NO.	DESCRIPTION

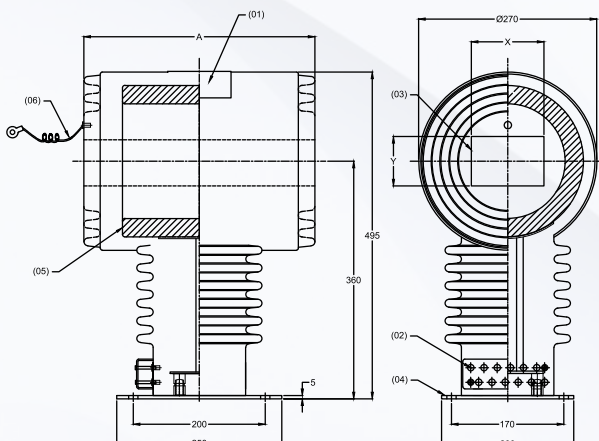
**CURRENT TRANSFORMER
(WINDOW/SLOT TYPE)
UP TO 3000A, 36kV
Model Type: AV-CT-33kV-06**



TECHNICAL SPECIFICATIONS

Rated System Voltage (Um)	36kV
Rated Test Voltage (Max.)	85kV / 190kVp
Rated Primary Current (Max.)	800A To 3000A
Rated Secondary Current (Max.)	1A Or 5A
Rated Short Time Current (Max.)	50kA
Rated Frequency	50Hz Or 60Hz
Nos. of Cores (Max.)	4 Nos.
Rated Burden (Max.)	30 VA
Insulation Class	E Or Better
Accuracy Class	Metering: Up to 0.2s Protection: Up to 5P20 Special Prot.: PS, PX

Note: Final specifications shall be as per customer requirements



A-2	350
A-1	250
TYPE	A

DIMENSIONS

06	PRIMARY PIGTAIL (To be connected with HV Bus Bar)
05	SECONDARY WINDING
04	MOUNTING BASE PLATE
03	PRIMARY TERMINAL
02	SECONDARY TERMINALS (M6)
01	RATING PLATE
SR. NO.	DESCRIPTION

*Window opening (Round/Rectangular) size shall be as per current ratings / Customer requirements

VOLTAGE TRANSFORMER (1-PHASE, EARTHED, FIXED TYPE) UP TO 36kV Model Type: AV-PT-33kV-02

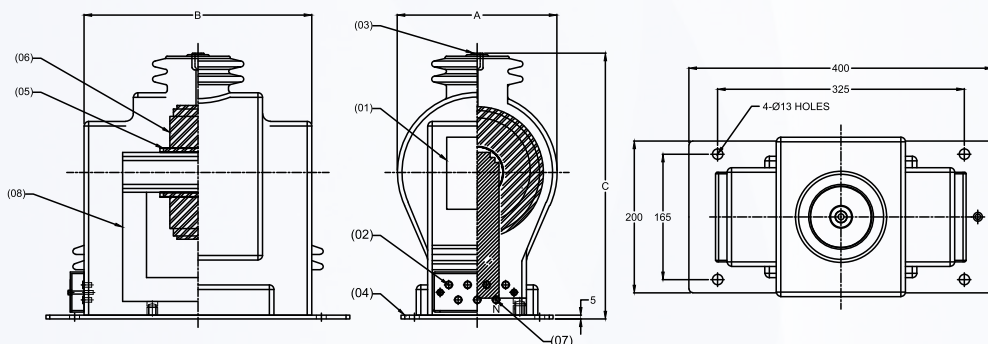


TECHNICAL SPECIFICATIONS

Rated System Voltage (Um)	38kV
Rated Test Voltage (Max.)	85kV / 190kVp
Rated Primary Voltage (Max.)	Up to 34.5kV/ $\sqrt{3}$
Rated Secondary voltage (Max.)	110V/ $\sqrt{3}$, 110V, 230V, etc.
Rated Voltage Factor (Max.)	1.9 for 8 Hours
Rated Frequency	50Hz Or 60Hz
Nos. of Sec. Windings (Max.)	3 Nos.
Rated Burden (Max.)	300VA
Insulation Class	E Or Better
Accuracy Class	Metering: Up to 0.2 Protection: 3P, 6P

Note: Final specifications shall be as per customer requirements

A-2	210	300	350
A-1	240	315	360
TYPE	A	B	C
DIMENSIONS			



08	CORE
07	PRIMARY NEUTRAL TERMINAL (N)
06	PRIMARY WINDING
05	SECONDARY WINDING
04	MOUNTING BASE PLATE
03	PRIMARY TERMINAL (A)
02	SECONDARY TERMINALS (M6)
01	RATING PLATE
SR. NO.	DESCRIPTION

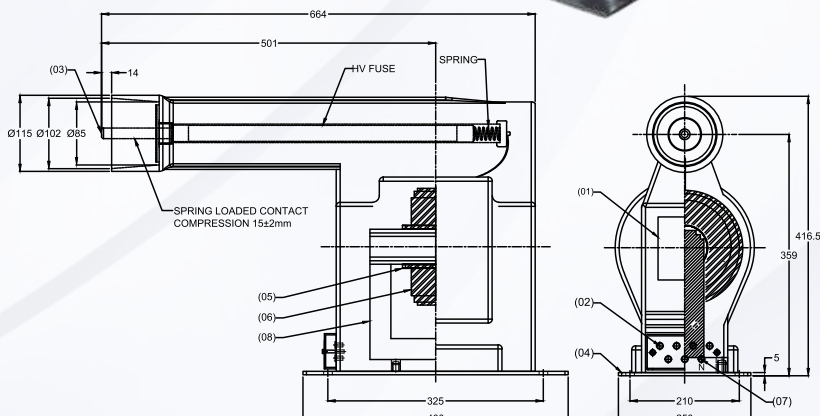
VOLTAGE TRANSFORMER (1-PHASE, EARTHED, DRAWOUT/GUN TYPE) UP TO 36kV Model Type: AV-PT-33kV-03



TECHNICAL SPECIFICATIONS

Rated System Voltage (Um)	38kV
Rated Test Voltage (Max.)	85kV / 190kVp
Rated Primary Voltage (Max.)	Up to 34.5kV/ $\sqrt{3}$
Rated Secondary voltage (Max.)	110V/ $\sqrt{3}$, 110V, 230V, etc.
Rated Voltage Factor (Max.)	1.9 for 8 Hours
Rated Frequency	50Hz Or 60Hz
Nos. of Sec. Windings (Max.)	3 Nos.
Rated Burden (Max.)	300VA
Insulation Class	E Or Better
Accuracy Class	Metering: Up to 0.2 Protection: 3P, 6P

Note: Final specifications shall be as per customer requirements



08	CORE
07	PRIMARY NEUTRAL TERMINAL (N)
06	PRIMARY WINDING
05	SECONDARY WINDING
04	MOUNTING BASE PLATE
03	PRIMARY TERMINAL (A)
02	SECONDARY TERMINALS (M6)
01	RATING PLATE
SR. NO.	DESCRIPTION

Our Customer's



AVCON SYSTEMS PVT. LTD.

S-9, Bulandshahar Road Industrial Area, Ghaziabad-201 009 U.P. INDIA

Email: sales@avconsystem.in, info@avconsystem.in

Ph : 0120- 4204499 Mob: 9311313774

Website : www.avconsystems.in